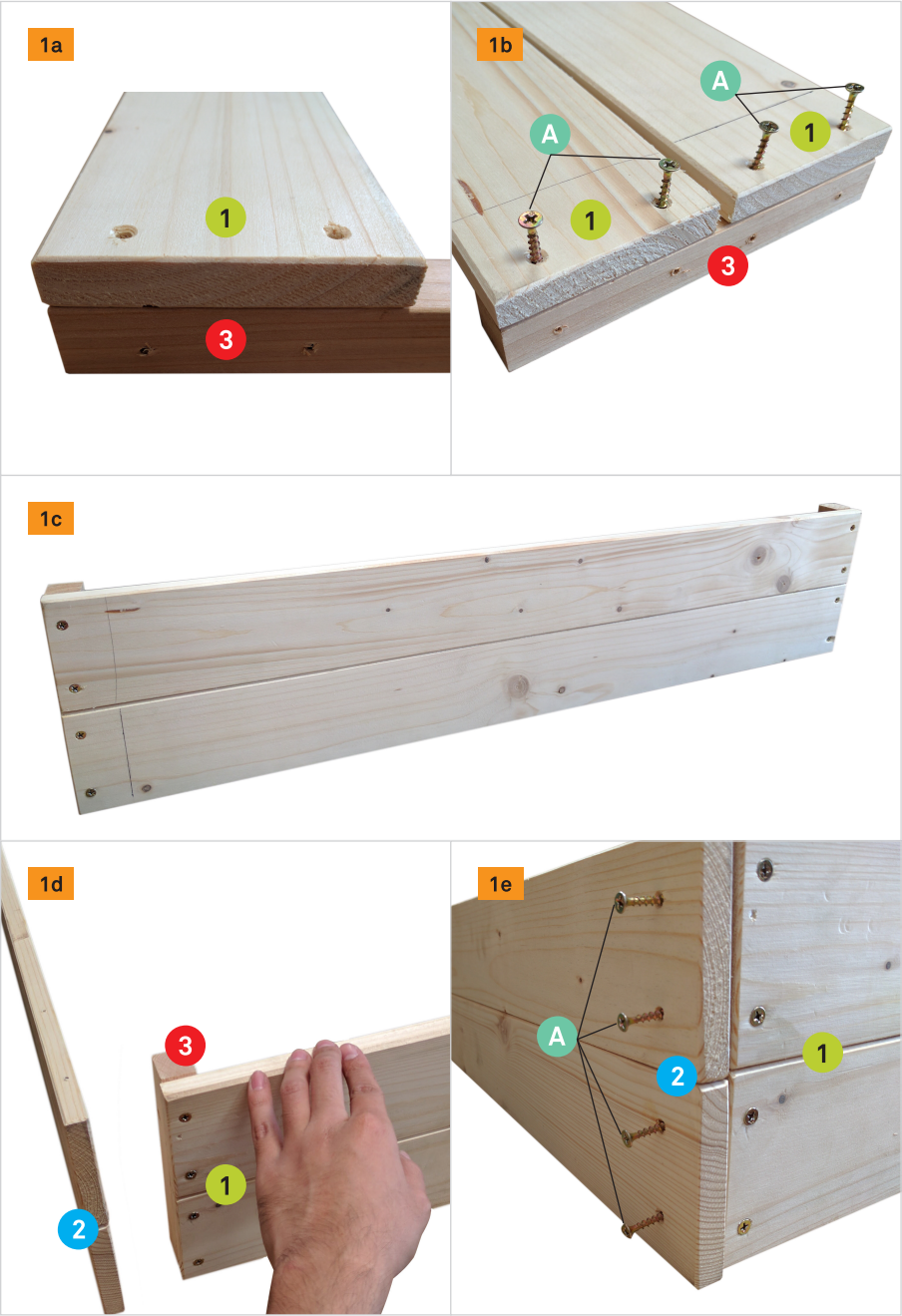
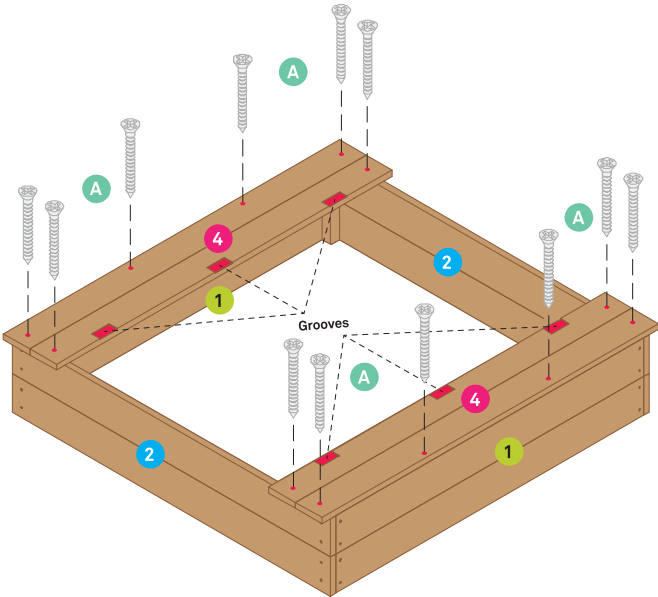


Step 1 cont.



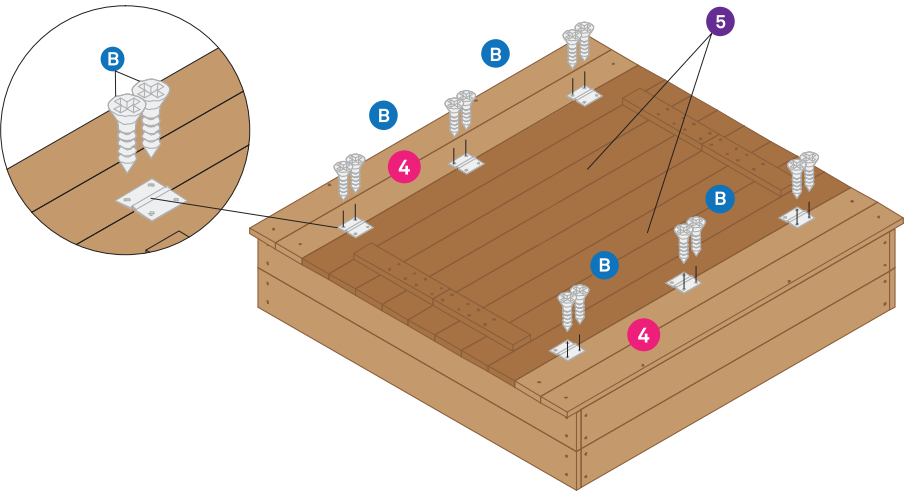
Step 2

Align both part 4 parallel to part 1 as shown in the image below. Make sure that the grooves are facing in and the pre-drilled holes are aligned along the sides of part 1 and 2. Use the A screws to drill in both part 1 and 2.



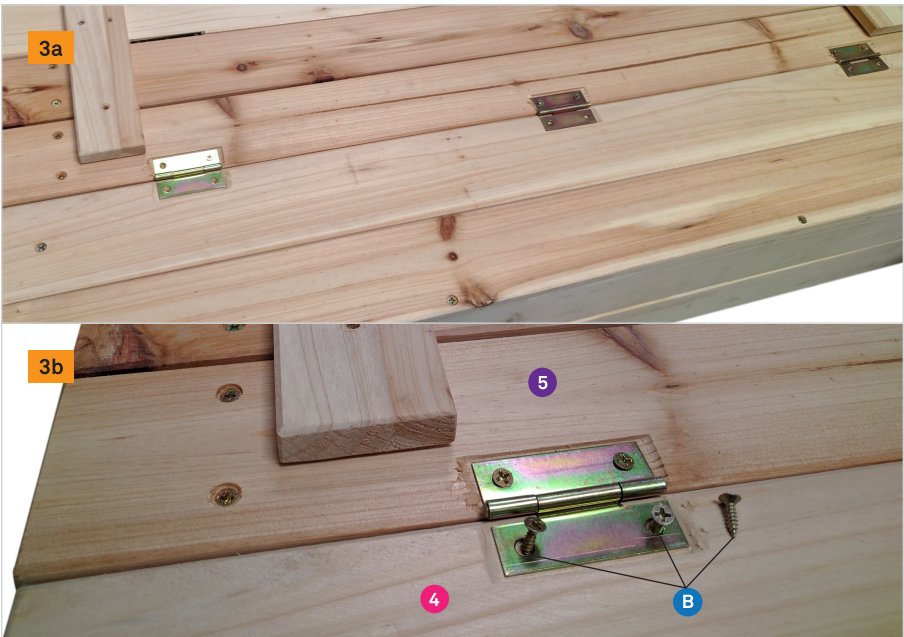
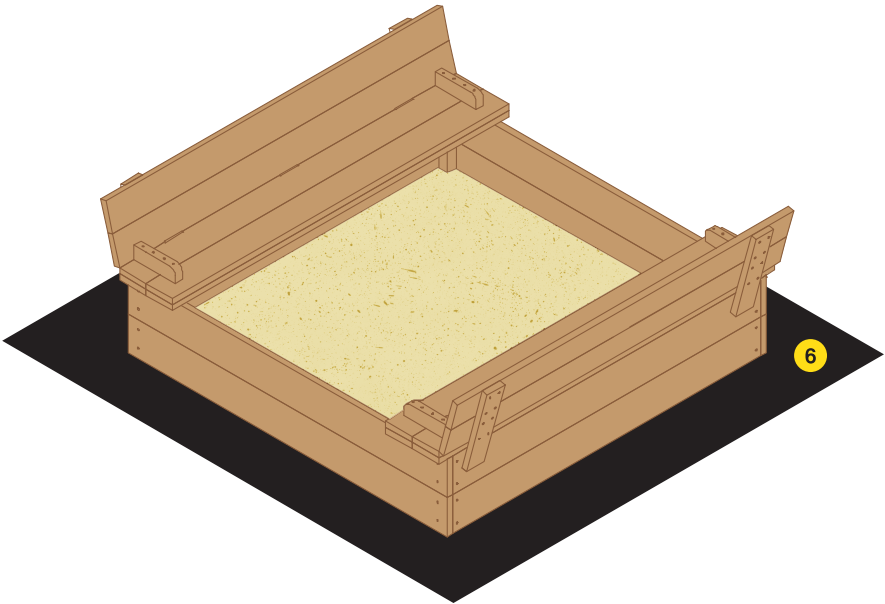
Step 3

Align the hinges on part 5 to their corresponding grooves on part 4. Once aligned, use the B screws to attach part 5 to part 4.



Step 4

Once part 5 is attached, fold them outward. Place part 6 under the sandpit before applying sand.



Lets us know if you have questions or concerns:

letsliveoutward@gmail.com  
(310) 982-2991

