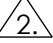
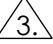
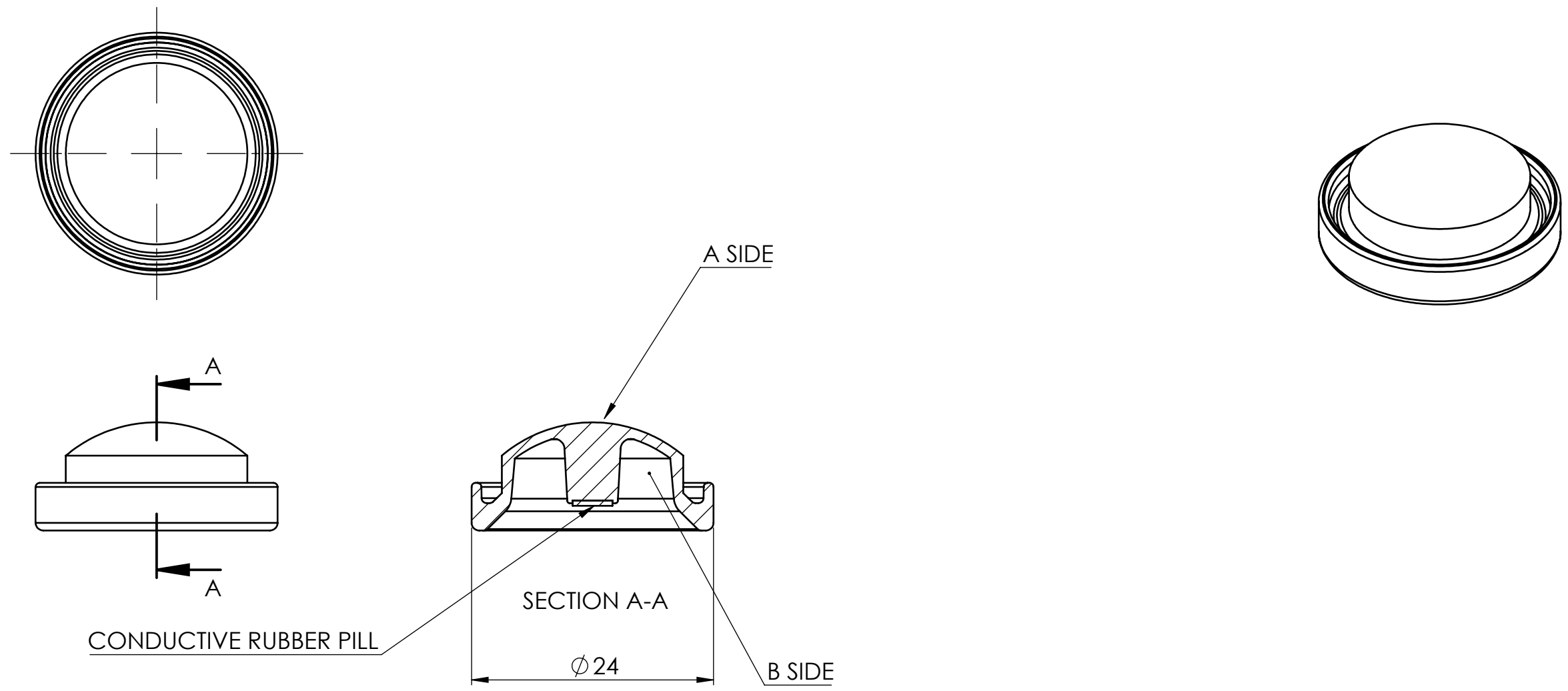



NOTES: UNLESS OTHERWISE SPECIFIED.

- 1. MATERIAL: SILICONE, TRANSLUCENT WHITE, 50 DUROMETER WITH CONDUCTIVE RUBBER PILL LOCATED ON CENTER PAD.
- 2.  TEXTURE A-SIDE: STANDARD TEXTURE = SPI FINISH D-2
- 3.  TEXTURE B-SIDE: SPI FINISH D-2
- 4. 3D CAD GEOMETR DEFINES FEATURES NOT DIMENSIONED. ALL DIMENSIONS IN MM. TOLERANCES: 1 TO 20MM ±.1, 21 TO 100 ±.15, 101 TO 160 ±.325, FOR EACH 20MM OVER 160 ADD ±.08
- 5. CORNER RADII 0.005" NOMINAL.
- 6. TYPICAL DRAFT ANGLE TO BE 1 DEGREE MAX. SEE CAD MODEL FOR ANGLE DETAILS.
- 7. PARTS TO BE CLEAN AND FREE FROM MOLD RELEASE OR ANY CONTAMINATION.
- 8. OVAL DIMENSIONS AND NOTES INDICATE INSPECTION DIMENSIONS.

REVISIONS			
REV	ECO NO.	DESCRIPTION	DRAWN DATE
V1	N/A	PRODUCTION RELEASE	5/5/2016



UNLESS OTHERWISE SPECIFIED DIMENSIONS ARE IN MM.		3RD ANGLE PROJECTION 		<b>CUTTING EDGE PRODUCTS</b> 120 Newport Center Drive Newport Beach, CA 92660 United States www.cepglobal.com 1-800-483-8020	
TOLERANCES AS FOLLOWS: LINEAR: mm±.2 ANGULAR: X°±1°		<b>MATERIAL</b>	SEE NOTES	TITLE	
INTERPRET DIMENSIONS & TOLERANCES PER ASME Y14.5-2009.		<b>FINISH</b>	SEE NOTES	POWER BUTTON	
PROPRIETARY AND CONFIDENTIAL		<b>PROJECT</b>	CEP		
THE INFORMATION CONTAINED IN THIS DRAWING IS THE SOLE PROPERTY OF CUTTING EDGE PRODUCTS CORPORATION. ANY REPRODUCTION IN PART OR A WHOLE WITHOUT THE WRITTEN PERMISSION OF CUTTING EDGE PRODUCTS CORPORATION IS PROHIBITED.		<b>ORIGINATOR</b>	<b>NAME</b>	<b>DATE</b>	SIZE <b>B</b>
		<b>DESIGNED BY</b>	B. SPERKO	3/16/2016	
		<b>DRAWN BY</b>	A. GIFFORD	5/5/2016	SCALE 2:1
					SHEET 1 OF 1