

4

3

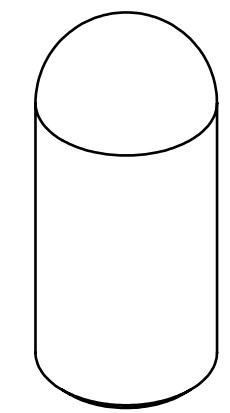
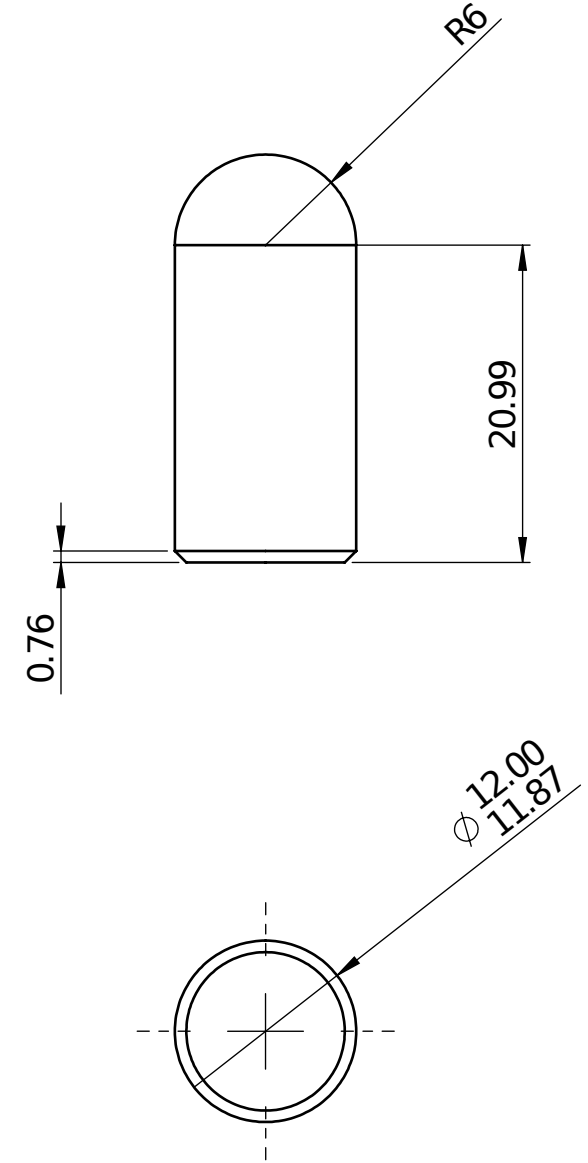
2

1

NOTES: UNLESS OTHERWISE SPECIFIED.

- 1. BREAK SHARP EDGES .13/.25 CHAMFER/RADII.
- 2. MACHINE FINISH: 1.6 μm OR BETTER.
- 3. PARTS TO BE CLEAN AND FREE FROM OIL OR ANY CONTAMINATION.
- 4. PACKAGE PARTS TO PREVENT DAMAGE AND LABEL WITH PN, REVISION AND PO.
- 5. OVAL DIMENSIONS AND NOTES INDICATE INSPECTION DIMENSIONS.
- 6. CERTIFICATE OF COMPLIANCE REQUIRED FOR EACH SHIPMENT OF PARTS.
- 7. FINISH: ASTM B633 TYPE I, CLASS SC1 (.005MM THICK).

REVISIONS			
REV	ECO NO.	DESCRIPTION	DRAWN DATE
V1	N/A	PRODUCTION RELEASE	5/5/2016



UNLESS OTHERWISE SPECIFIED DIMENSIONS ARE IN MM. TOLERANCES AS FOLLOWS: LINEAR: mm ± .2 ANGULAR: X° ± 1°	3RD ANGLE PROJECTION		CUTTING EDGE PRODUCTS 120 Newport Center Drive Newport Beach, CA 92660 United States www.cepglobal.com 1-800-483-8020			
	MATERIAL	18-8 Stainless Steel	PIVOT STUD			
FINISH	SEE NOTES					
INTERPRET DIMENSIONS & TOLERANCES PER ASME Y14.5-2009.	PROJECT	CEP	SIZE	DWG NO.		
PROPRIETARY AND CONFIDENTIAL THE INFORMATION CONTAINED IN THIS DRAWING IS THE SOLE PROPERTY OF CUTTING EDGE PRODUCTS CORPORATION. ANY REPRODUCTION IN PART OR A WHOLE WITHOUT THE WRITTEN PERMISSION OF CUTTING EDGE PRODUCTS CORPORATION IS PROHIBITED.	ORIGINATOR	NAME	DATE	B	C 00016	REV V1
	DESIGNED BY	B. SPERKO	11/12/2015			
	DRAWN BY	A. GIFFORD	5/5/2016	SCALE	2:1	SW FILE NAME: C00016 Pivot Stud V1

4

3

2

1